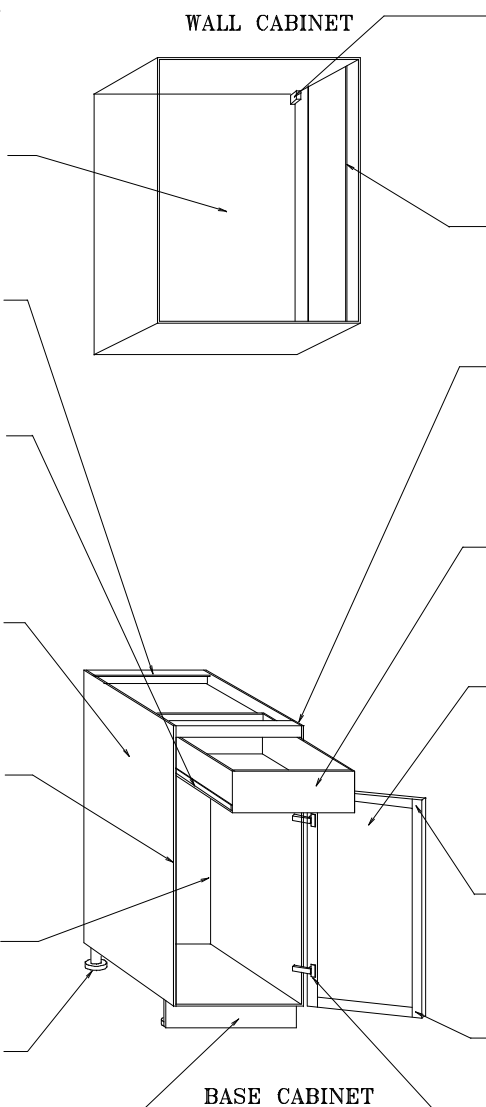


18 GOOD REASONS TO PURCHASE CABINETS FROM ASHTON KITCHENS

1. All cabinets are designed for optimum balance between cost, strength and aesthetics.
2. Maintenance-free durable, scratch-resistant interior in choice of melamine or real wood veneers.
3. Right-angle brace provides increased cabinet strength and superior work surface support.
4. Blum Tandem™ concealed drawer slides with carriage roller mechanism and firm self-closing action are standard.
5. Cabinet material 120 gram premium finish melamine over higher density board. Real wood veneer on visible sides.
6. Cabinet facing in heavy melamine or real wood veneer to match doors. Faceframe designs are also available.
7. Back panel securely slotted into cabinet case to ensure squareness.
8. Adjustable cabinet legs greatly reduce cost of installation and permit choice of kickplate and counter height.
9. Kickplate in matching 5/8" material is adjustable and removable for easy flooring installation and a perfect fit to your floor.



10. Computer assisted manufacturing ensures lower costs for custom sizes.
11. Rugged cabinet suspension system has two dimensional adjustment for perfect levelling. Steel track attaches to every wall stud for secure mounting.
12. 5mm diameter, 32 mm pitch hole boring provides flexible shelf adjustment.
13. Cabinet construction uses plate joinery (biscuits) without staples or screws. This method has twice the unit gluing surface of dowelling .
14. Drawer base and sides are 5/8" melamine, assembled using tongued and grooved joints.
15. All solid wood doors are manufactured by Ashton Kitchens in distinctive styles, carefully matched for colour and finished with colour-fast catalysed lacquer.
16. Door frame joints are mortise & tenon. No staples, nails or mitre joints that tend to open at corners.
17. Clear bumper pads unobtrusively soften door closing.
18. Blum 6-way adjustable CLIP™ hinges with a minimum of 125° opening are used on all doors. They feature simple removal and refit of doors without loss of adjustment or use of tools.